

mFrame by adsystem.

FRAMES..... 03

- Straight frames 496 mm..... 04
- Straight frames 992 mm..... 06
- Arched frames 496 mm..... 08

CLAMPS..... 10

CONNECTORS..... 12

- Standard connectors..... 13
- I connectors..... 14
- L connectors..... 16
- T connectors..... 17
- X connectors..... 17

PINS..... 18

- Pin FAT..... 19
- Pin standard..... 20

NUTS..... 21

SUPPORTING FEET..... 23

COVERS..... 26

- Flat covers..... 27
- Corner covers..... 27
- Fastening..... 28
- End caps..... 29

EXHIBITION SHELVES..... 30

- Shelves..... 31
- Shelf holders..... 31

EXHIBITION PANELS..... 32

- Panels..... 33
- Exhibition hook..... 33

TV HOLDER..... 34

LED LIGHTING..... 36

- LED lamp 60 diodes..... 37
- LED lamp 116 diodes..... 37
- LED lamp adapter..... 38
- mFrame LED lamp..... 38

TRANSPORT ACCESSORIES... 39

- Frame trolley..... 40
- Locking strap..... 40
- Protective plastic..... 41
- Transport bags..... 42

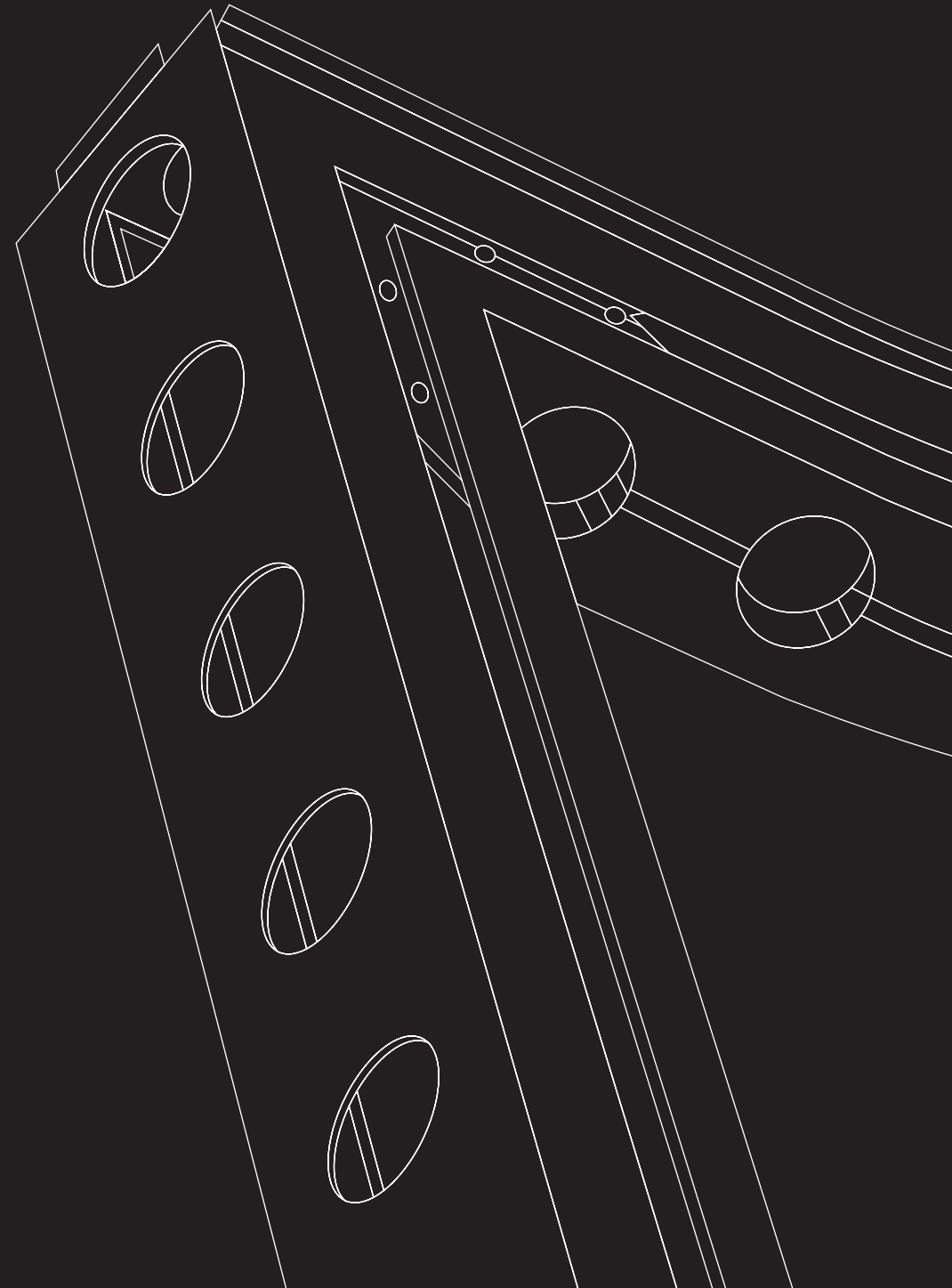
FRAMES

Frames are used to build wall structures that can be connected using tool-free connectors.

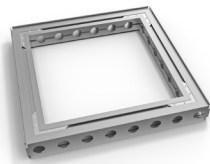
There are 21 sizes of frames, which includes arch frames, door frame, and adjustable connector for frame width.

Straight frames - structural elements of walls, roofs and floors.

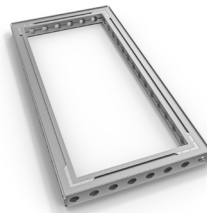
Arched frames - structural elements, add new possibilities for configuring the layout and forms of the stand.



STRAIGHT FRAMES 496mm



MFR-FRA-496X496



MFR-FRA-496X992



MFR-FRA-496X1240



MFR-FRA-496X1488

Dimensions	496 x 496 x 62 mm	496 x 992 x 62 mm	496 x 1240 x 62 mm	496 x 1488 x 62 mm
Weight	3000 g	4500 g	5200 g	6000 g
Material	Aluminium	Aluminium	Aluminium	Aluminium
Usage	Structural frames can be positioned horizontally, vertically, or flat.	Structural frames can be positioned horizontally, vertically, or flat.	Structural frames can be positioned horizontally, vertically, or flat.	Structural frames can be positioned horizontally, vertically, or flat.

STRAIGHT FRAMES 496mm



MFR-FRA-496X1984



MFR-FRA-496X2480



MFR-FRA-496X2976

Dimensions 496 x 1984 x 62 mm

Dimensions 496 x 2480 x 62 mm

Dimensions 496 x 2976 x 62 mm

Weight 7500 g

Weight 9000 g

Weight 10500 g

Material Aluminium

Material Aluminium

Material Aluminium

Usage Structural frames can be positioned horizontally, vertically, or flat.

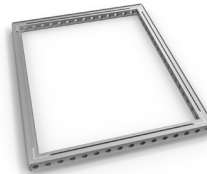
Usage Structural frames can be positioned horizontally, vertically, or flat.

Usage Structural frames can be positioned horizontally, vertically, or flat.

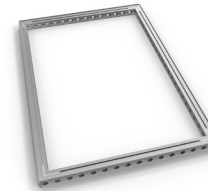
STRAIGHT FRAMES 992mm



MFR-FRA-992X992



MFR-FRA-992X1240



MFR-FRA-992X1488



MFR-FRA-992X1984

Dimensions	992 x 992 x 62 mm	992 x 1240 x 62 mm	992 x 1488 x 62 mm	992 x 1984 x 62 mm
Weight	6000 g	7000 g	7500 g	9000 g
Material	Aluminium	Aluminium	Aluminium	Aluminium
Usage	Structural frames can be positioned horizontally, vertically, or flat.	Structural frames can be positioned horizontally, vertically, or flat.	Structural frames can be positioned horizontally, vertically, or flat.	Structural frames can be positioned horizontally, vertically, or flat.

STRAIGHT FRAMES 992mm



MFR-FRA-992X2480



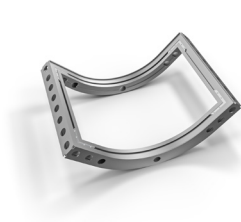
MFR-FRA-992X2976



MFR-DOO-992X2480-S

Dimensions	992 x 2480 x 62 mm	992 x 2976 x 62 mm	992 x 2480 x 62 mm
Weight	12000 g	14000 g	26000 g
Material	Aluminium	Aluminium	Aluminium
Usage	Structural frames can be positioned horizontally, vertically, or flat.	Structural frames can be positioned horizontally, vertically, or flat.	Structural frames can be positioned horizontally, vertically, or flat.

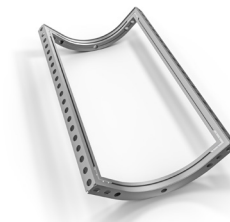
ARCHED FRAMES 496mm



MFR-FRA-LUK-496X496



MFR-FRA-LUK-496X992



MFR-FRA-LUK-496X1240



MFR-FRA-LUK-496X1488

Dimensions	496 x 496 x 496 mm	496 x 992 x 496 mm	496 x 1240 x 496 mm	496 x 1488 x 496 mm
Weight	6300 g	7800 g	8520 g	9270 g
Material	Aluminium	Aluminium	Aluminium	Aluminium
Usage	Structural frames can be positioned horizontally, vertically, or flat.	Structural frames can be positioned horizontally, vertically, or flat.	Structural frames can be positioned horizontally, vertically, or flat.	Structural frames can be positioned horizontally, vertically, or flat.

ARCHED FRAMES 496mm



MFR-FRA-LUK-496X1984



MFR-FRA-LUK-496X2480



MFR-FRA-LUK-496X2976

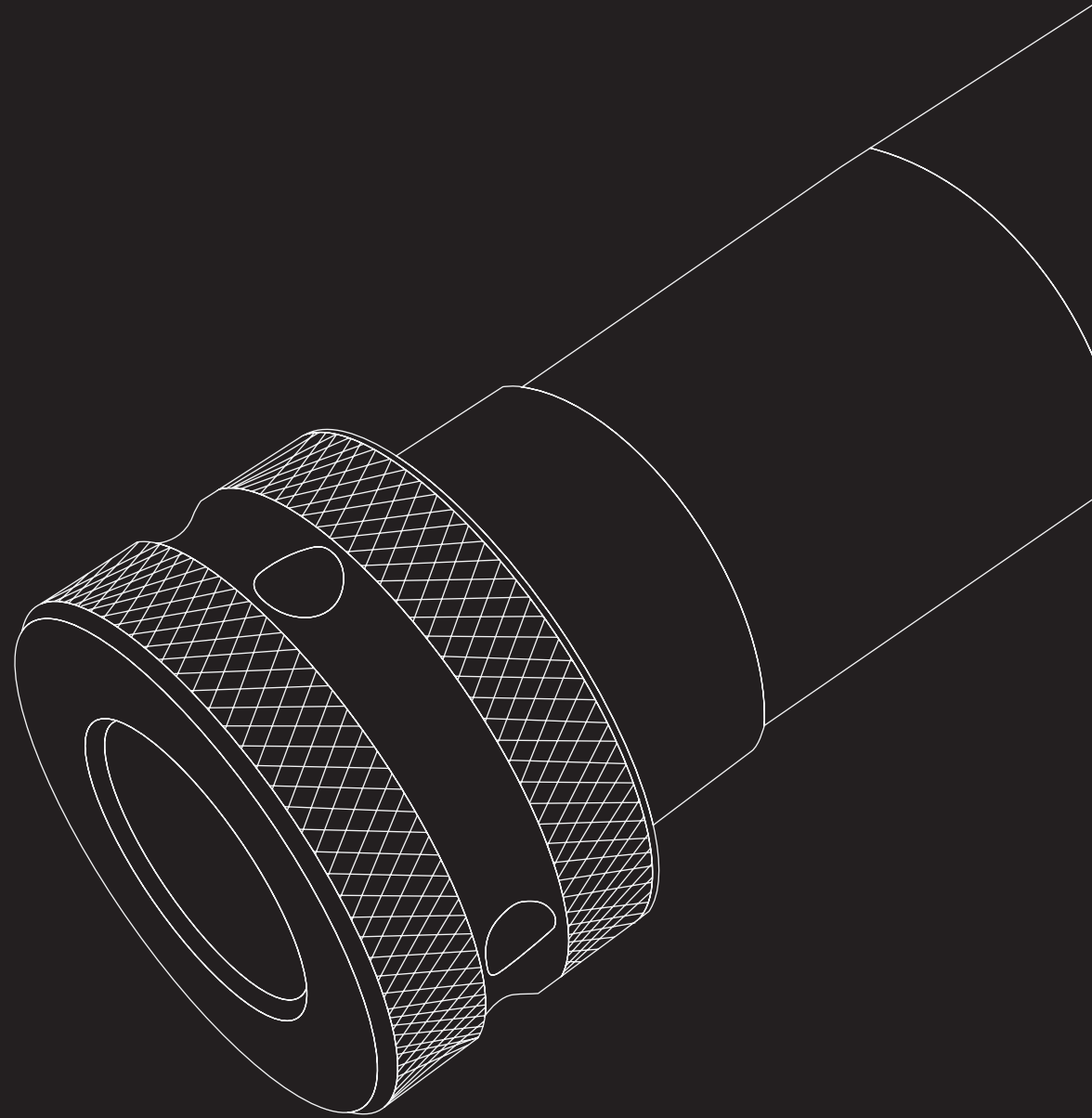
Dimensions	496 x 1984 x 496 mm	496 x 2480 x 496 mm	496 x 2976 x 496 mm
Weight	10750 g	12240 g	13740 g
Material	Aluminium	Aluminium	Aluminium
Usage	Structural frames can be positioned horizontally, vertically, or flat.	Structural frames can be positioned horizontally, vertically, or flat.	Structural frames can be positioned horizontally, vertically, or flat.

CLAMPS

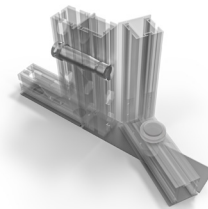
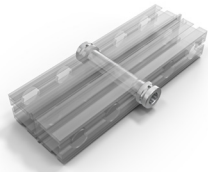
The clamp connectors are used to connect two mFrame frames together at 180 degrees.

Depending on the usage, the appropriate type is selected. There are 3 types available:

- Aluminium clamp connector,
- Plastic clamp connector,
- Aluminium door clamp connector - used to connect the door frame to a standard frame.



CLAMPS

**MFR-CLA-CON****MFR-CLA-CON-P****MFR-CLA-DOOR-C**

Dimensions	35 x 135 x 35 mm	35 x 145 x 35 mm	35 x 135 x 35 mm
Weight	166 g	58 g	132 g
Material	Aluminium	Plastic material	Aluminium
Usage	Connect 2 frames together at 180 degrees.	Connect 2 frames together at 180 degrees. A lighter and more affordable equivalent to the standard clamp.	The clamp head hides in the frame, allowing us to open and close the door frame freely.

CONNECTORS

To simplify the use of the mFrame system, we offer tool-free connectors that allow frames to be connected in various configurations, as well as the addition of other advertising media such as light-boxes.

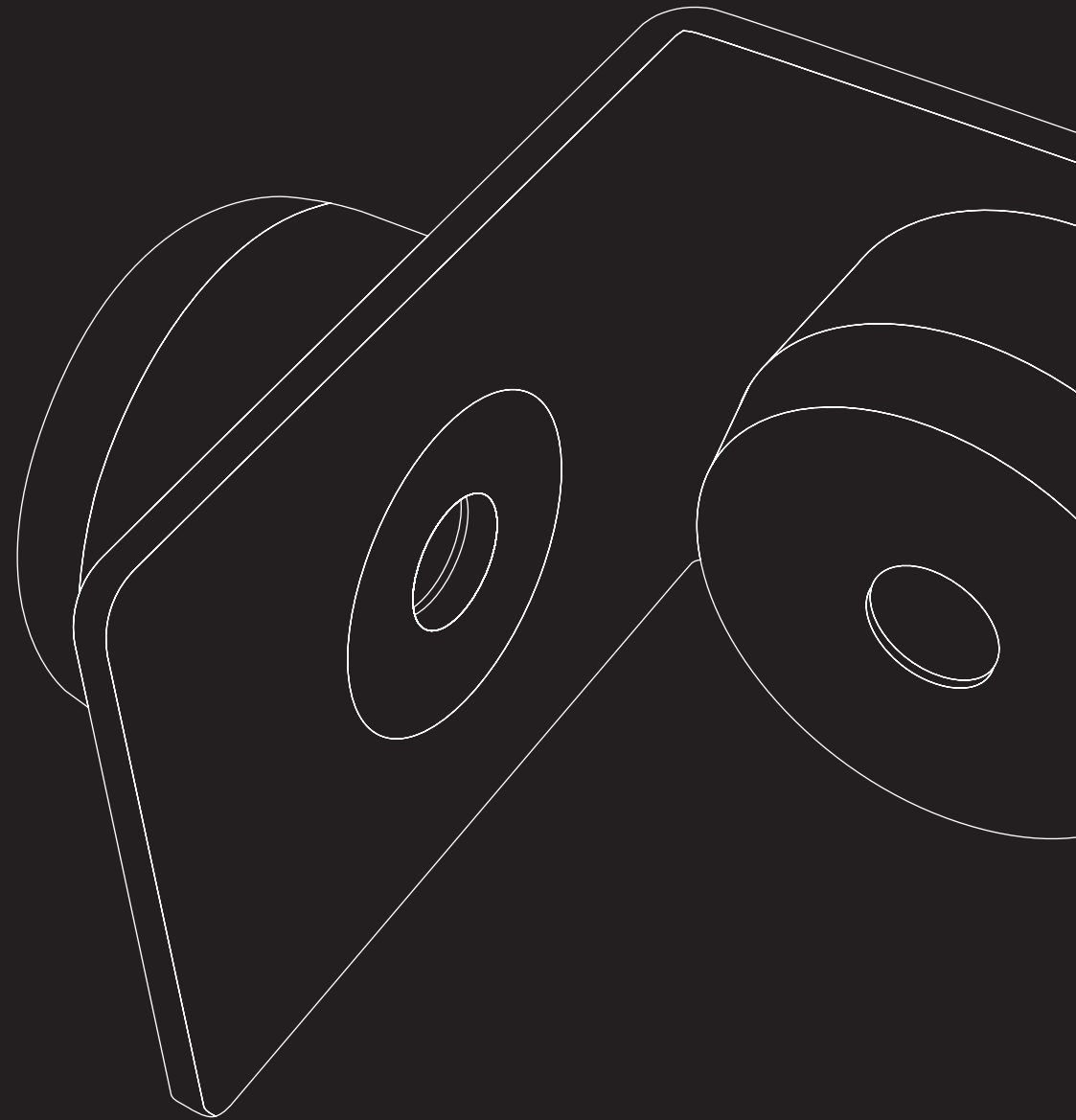
Connectors - these are attached to the side of the frame. They are used to connect the mFrame or the adFrame LMD panel at a 90-degree angle.

I connectors - connectors mounted on the top and bottom of the frame to join the mFrame frames into an I-shape at a 180-degree angle.

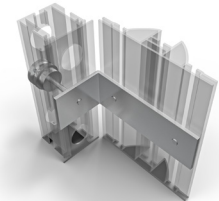
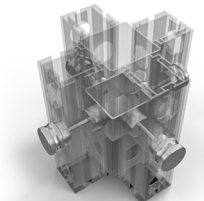
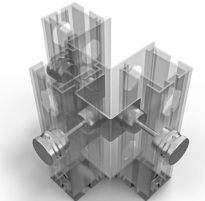
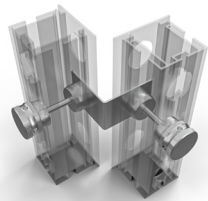
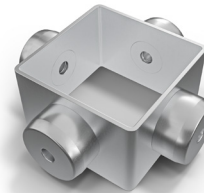
L connectors - connectors mounted on the top and bottom of the frame to join the mFrame frames into an L-shape at a 90-degree angle.

T connectors - connectors mounted on the top and bottom of the frame to connect the three mFrame frames in a T-shape.

X connectors - connectors mounted on the top and bottom of the frame to connect the four mFrame frames in an X-shape.

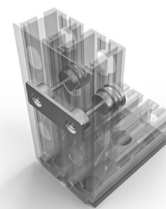
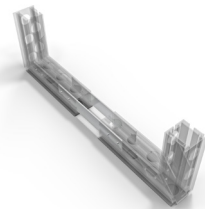
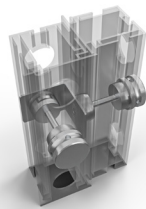
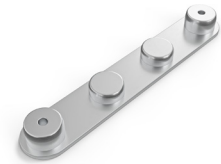
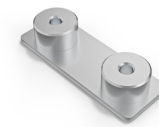


STANDARD CONNECTORS

**MFR-CON-ZEW-90-S****MFR-CON-3ZEW****MFR-CON-4ZEW****MFR-LAC-LMD**

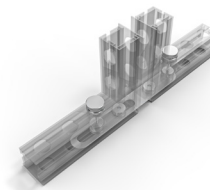
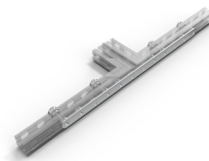
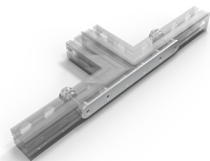
Dimensions	68 x 38 x 68 mm	92 x 40 x 78 mm	93 x 40 x 93 mm	145 x 68 x 50 mm
Weight	197 g	320 g	386 g	g
Material	Aluminium	Aluminium	Aluminium	Aluminium
Usage	Connection of two frames at 90 degrees. Universal outside-in connector.	External connection of the three frames at 90 degrees.	External connection of the four frames at 90 degrees.	Universal connection of the frame to the LMD panel.

STANDARD CONNECTORS | CONNECTORS

**MFR-CON-WEW-S-90-S****MFR-CON-3ZEW****MFR-LAC-I-2-180-S****MFR-CON-I-4-180-S**

Dimensions	68 x 38 x 62mm	250 x 3 x 39 mm	100 x 18 x 36 mm	225 x 18 x 38 mm
Weight	210 g	232 g	247 g	473 g
Material	Aluminium	Aluminium	Aluminium	Aluminium
Usage	External connection of two frames at 90 degrees. A universal inside-outside joint.	Connector to allow frame width adjustment for non-standard dimensions.	Attached to the sides of the frame, it connects the frames in parallel for greater stability of the wall, with the additional weight on it.	Attached from the top and bottom of the frame, it connects/ fastens them at 180 degrees. Used to stiffen/reinforce wall and roof structures.

I CONNECTORS



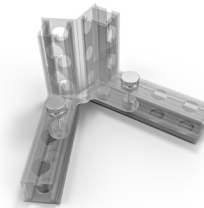
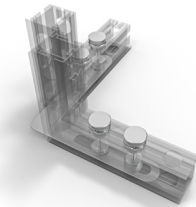
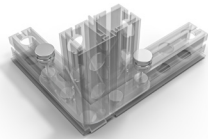
MFR-CON-I-6-180-S

MFR-CON-I-12-180-S

MFR-CON-I-R-D-180-S

Dimensions	350 x 18 x 38 mm	720 x 18 x 38 cm	300 x 18 x 40 cm
Weight	752 g	1570 g	447 g
Material	Aluminium	Aluminium	Aluminium
Usage	Attached from the top and bottom of the frame, it connects them at 180 degrees. Used to stiffen wall and roof structures.	Attached from the top and bottom of the frame, it connects them at 180 degrees. Used to stiffen wall and roof structures.	Attached from the top and bottom of the frame, it connects them at 180 degrees. Used to stiffen wall and roof structures, with the possibility of adjusting the distance between them up to 12 cm.

L CONNECTORS



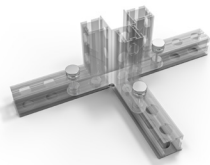
MFR-CON-L-90-S

MFR-CON-L-R-D-90-S

MFR-CON-REG-K

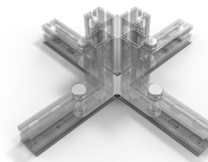
Dimensions	164 x 18 x 40 mm	400 x 18 x 40 mm	225 x 18 x 40 mm
Weight	538 g	527 g	524 g
Material	Aluminium	Aluminium	Aluminium
Usage	Mounted from the top and bottom to connect the frames in an L-shape at 90 degrees.	Mounted from the top and bottom to connect the frames in an L-shape at 90 degrees with the possibility of adjusting the distance between them.	Mounted from the top and bottom to connect the frames at angles from 0 to 180 degrees.

T CONNECTORS



MFR-CON-T

X CONNECTORS



MFR-CON-X

Dimensions 286 x 18 x 164 mm

Weight 667 g

Material Aluminium

Usage Mounted from the top and bottom of the frame, connection of the three frames at 90 degrees, additional bracing for the structure.

Dimensions 290 x 18 x 290 mm

Weight 876 g

Material Aluminium

Usage Mounted from the top and bottom of the frame, connection of two or four frames at 90 degrees, additional bracing for the structure.

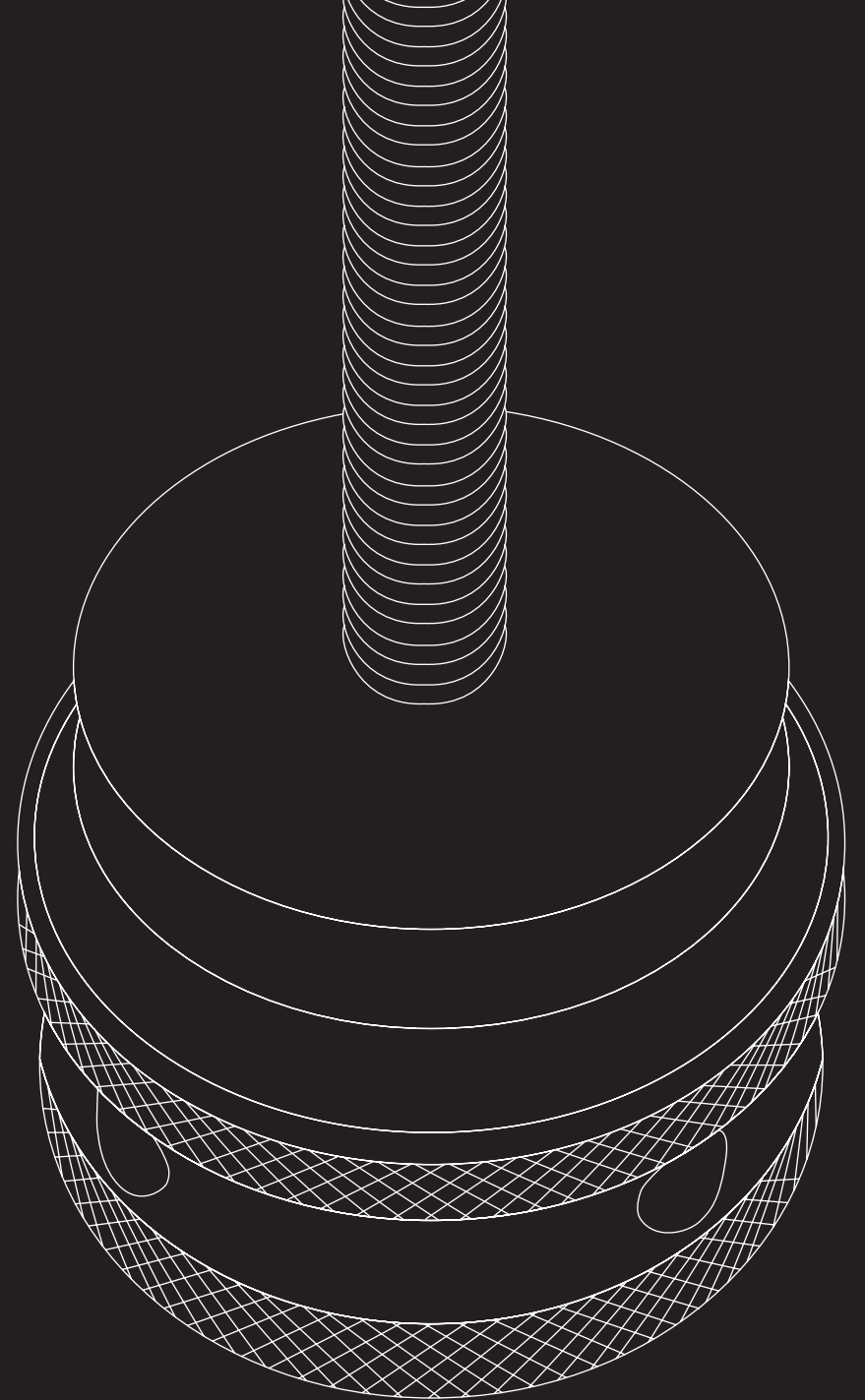
PINS

They are used to join connectors and frames as well as to mount accessories.

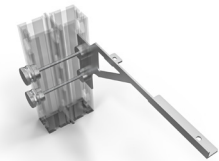
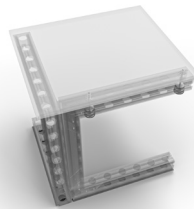
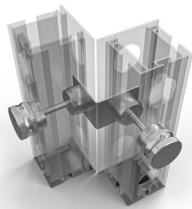
We distinguish Pins with two types of head:

Pin Fat, Pin T - tool-free pin, used when the headstock is inside the frame.

Pin Super Slim - screwed on with an 8 mm Allen key, used when the headstock must remain between the frames.

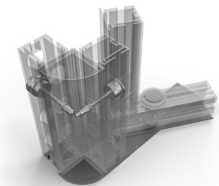
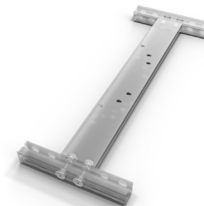
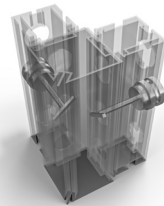
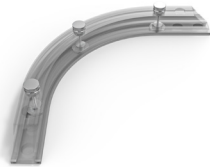


PIN FAT

**MFR-PIN-FAT-4****MFR-PIN-FAT-5****MFR-PIN-FAT-7****MFR-PIN-FAT-10**

Dimensions	35 x 70 x 35 mm	35 x 78 x 35 mm	35 x 98 x 35 mm	35 x 128 x 35 mm
Weight	74 g	81 g	89 g	101 g
Material	Aluminium	Aluminium	Aluminium	Aluminium
Usage	The Pin passes through the frame, used to attach connectors, and lights.	The Pin passes through the frame, used to fix the top with the frames.	The Pin passes completely through the frame, used to mount LMD panels under a 180-degree angle.	The Pin passes completely through two frames, used in the assembly of exhibition accessories.

PINY STANDARD



MFR-PIN-MOC-M-C

MFR-PIN-T-L

MFR-PIN-SUP-4

MFR-PIN-SUP-7

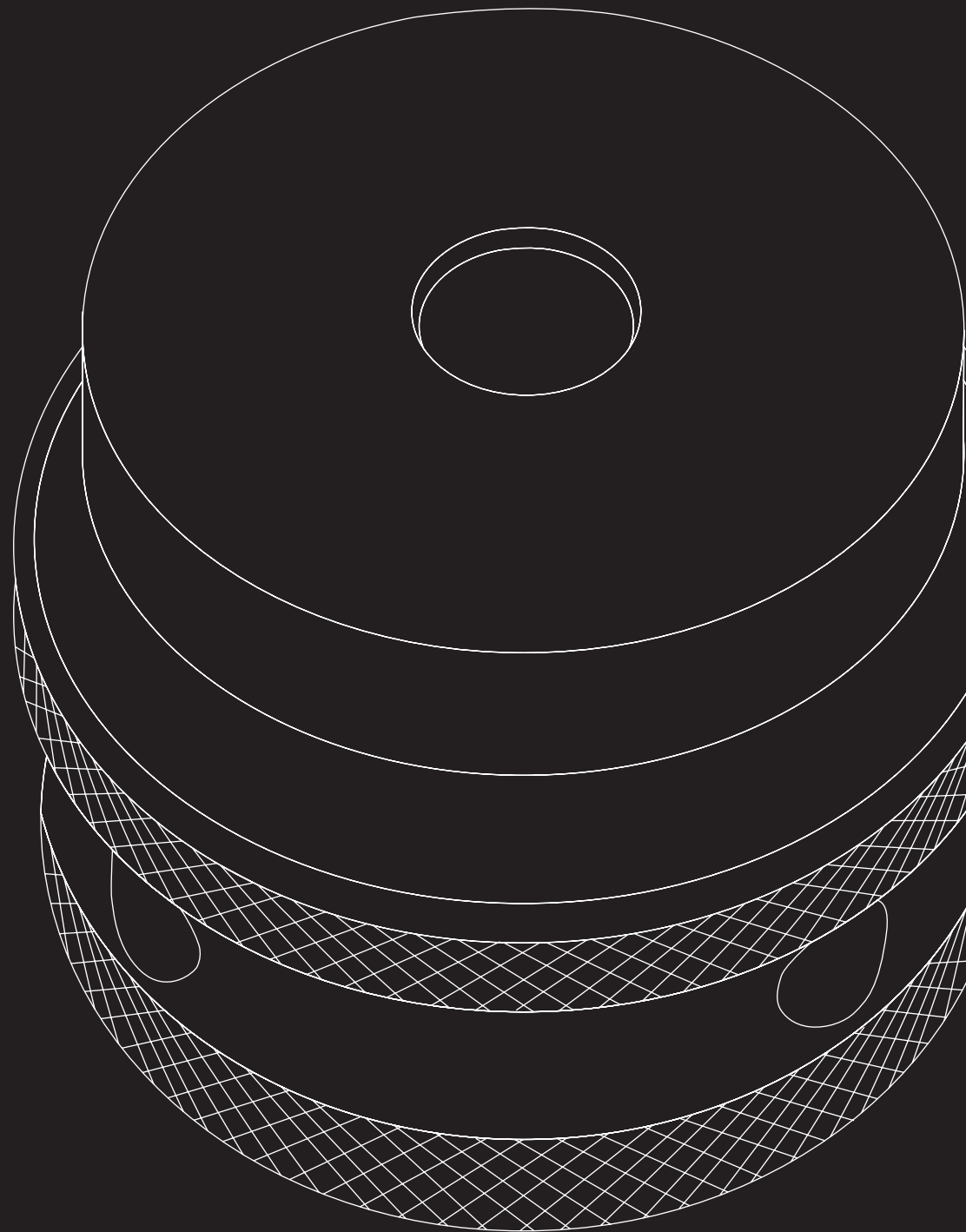
Dimensions	48 x 61 x 61 mm	60 x 7 x 35 mm	35 x 68 x 35 mm	35 x 88 x 35 mm
Weight	61 g	19 g	48 g	61 g
Material	Aluminium	Aluminium	Aluminium	Aluminium
Usage	The Pin passes through the frame, used when installing the covers: flat arched, quarter round, and square without overlapping graphics.	The Pin passes through the frame, used when installing the corner covers.	The Pin passes through the frame, used to attach connectors, and lights. Pin also is used for the outer frame when a cover is fitted.	The Pin passes completely through the frame, used to mount frames to droor frame.

NUTS

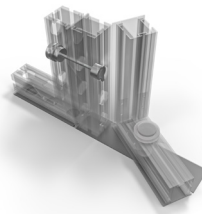
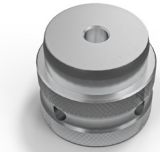
A component with an 8mm internal thread, used as a pin nut. The tool-free connector allows easy use of the system's features such as: display accessories, TV panel, door frame.

We distinguish:

- Fat nuts,
- Pin nuts Door.



NUTS



MFR-NAK-FAT

MFR-PIN-DOOR-C

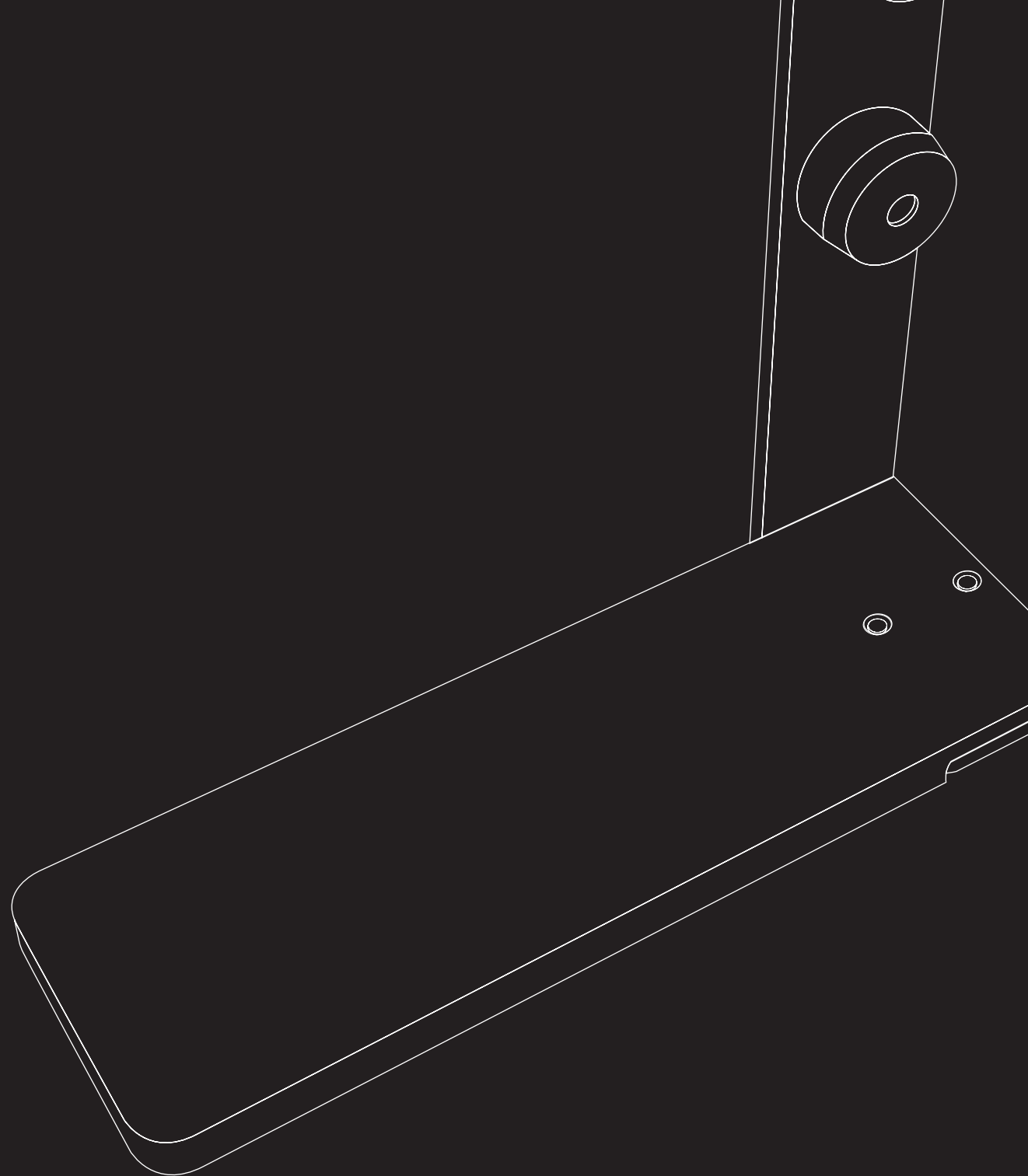
Dimensions	35 x 28 x 61 mm	36 x 21 x 30 mm
Weight	61 g	50 g
Material	Aluminium	Aluminium
Usage	Universal pin nut.	Nut used when attaching frames to the door frame from the frame side.

SUPPORTING FEET

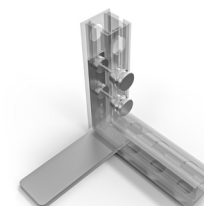
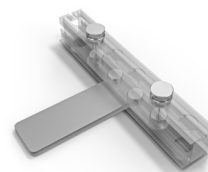
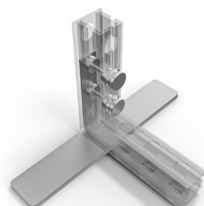
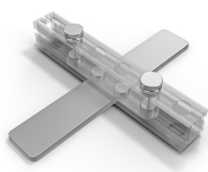
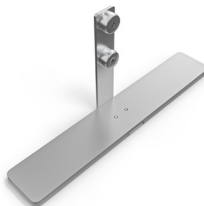
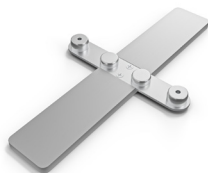
An element that assists in the stabilisation of wall constructions, particularly single walls or those which bear additional loads. Depending on: a load of a given module, and the aesthetic effect we want to achieve in the appearance of the stand, we choose the size of the foot, its shape, and the place of fixing. Attached to the frames with pins.

We distinguish:

- Single- and double-sided support feet,
- Sheet metal support feet - standard and heavier solution, made of 3 mm sheet metal.



SUPPORTING FEET

**MFR-FOOT****MFR-PIN-DOOR-C****MFR-FOOT-HALF****MFR-FOOT-HALF-B**

Dimensions 430 x 35 x 72 mm

190 x 710 x 430 mm

220 x 29 x 226 mm

220 x 158 x 72 mm

Weight 1298 g

1290 g

884 g

875 g

Material Aluminium

Aluminium

Aluminium

Aluminium

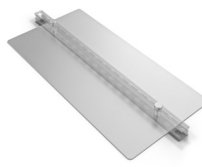
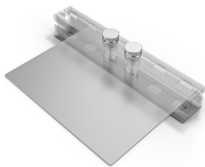
Usage Double-sided support foot fitted to the bottom of the frame. Can be fitted across the full width of the frame. Recommended for single-wall constructions.

Double-sided side support foot attached to the side of the frame. Recommended for single wall construction.

Single-sided support foot fitted to the bottom of the frame. Can be fitted across the full width of the frame. Recommended for single-wall constructions.

Single-sided lateral support foot attached to the side of the frame.

SUPPORTING FEET



MFR-FOOT-BLA-S-S-S

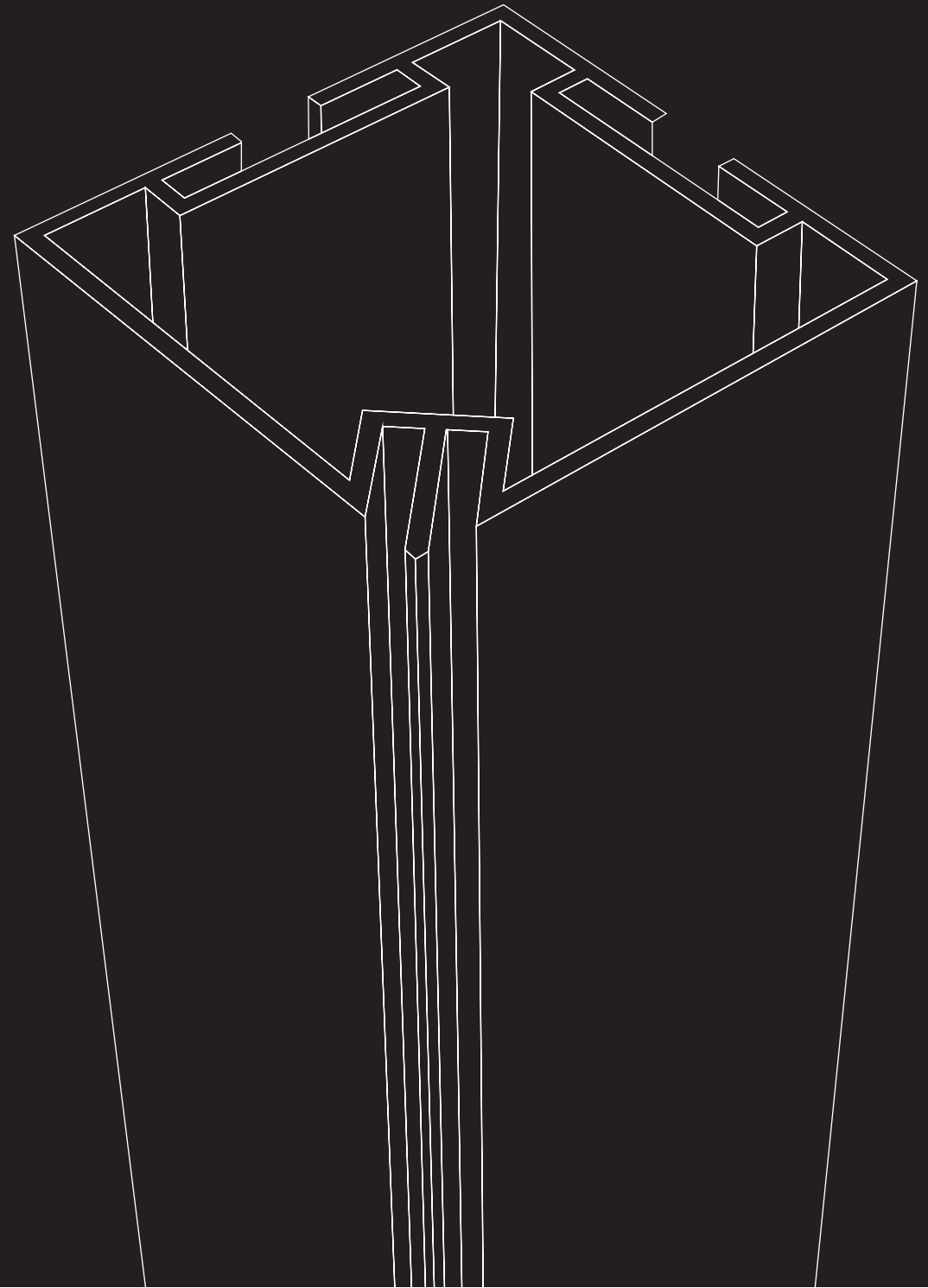
MFR-FOOT-BLA-D-S-L

Dimensions	310 x 17 x 250 mm	992 x 17 x 496 mm
Weight	1900 g	12000 g
Material	Aluminium	Aluminium
Usage	Single-sided sheet metal support foot fixed from the bottom of the frame. Recommended when constructing a single wall and/or using exhibition accessories.	Double-sided sheet metal support foot fixed from the bottom of the frame. Recommended when constructing a single wall and/or using exhibition accessories.

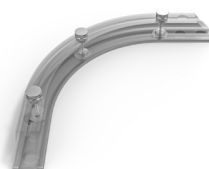
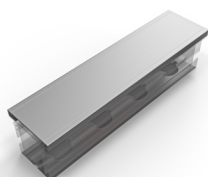
COVERS

Cover profiles attached to the sides of the frame conceal the mounting holes characteristic of the mFrame, so that the stand walls are aesthetically finished. Made of aluminium, they can also be powder-coated in accordance with RAL colours.

- **Flat cover profiles** - typically used for aesthetic reasons.
- **Corner cover profiles** - used for a more aesthetically pleasing wall finish, additionally serving as a link between two walls. A 90-degree outside-in connection.
- **End caps** - for an even better finish of the stand walls.



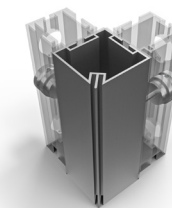
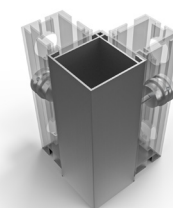
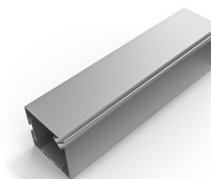
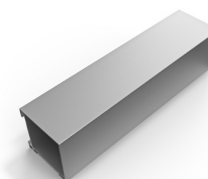
FLAT COVERS



MFR-COV-PRO-P

MFR-CON-L-R-D-90-S

CORNER COVERS

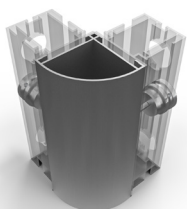


MFR-COV-PRO-K

MFR-COV-PRO-K-G

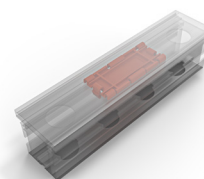
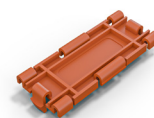
Dimensions	62 x 8 mm	496 x 8 x 496 mm	62 x 62 mm	62 x 62 mm
Weight	403 g / 100 cm	300 g	1010 g / 100 cm	1900 g / 100 cm
Material	Aluminium	Aluminium	Aluminium	Aluminium
Usage	Flat straight cover fastened to the side of the frame,	Flat arch cover fixed to the side. Attached to the frame with MFR-PIN-MOC-M-C pin and MFR-NAK-FAT nut.	A Square corner cover attached to the side of the frame connects the two frames at 90 degrees. Attached to the frame with MFR-PIN-T-L pin and MFR-NAK-FAT nut.	A Square corner cover with an overlapping graphic attached to the side of the frame connects the two frames at 90 degrees. Attached to the frame with MFR-PIN-T-L pin and MFR-NAK-FAT nut.

CORNER COVERS



MFR-COV-PRO-C

FASTENING



MFR-COV-PRO-M

Dimensions 62 x 62 mm

Weight 1130 g / 100 cm

Material Aluminium

Usage Quarter corner cover fitted to the side of the frame connects the two frames at 90 degrees. Attached to the frame with MFR-PIN-MOC-M-C pin and MFR-NAK-FAT nut.

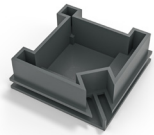
Dimensions 97 x 16 x 38 mm

Weight 14 g

Material Plastic material

Usage Fastening of the flat straight cover with frame.

END CUPS



MFR-COV-PRO-Z-K

MFR-COV-PRO-Z-C

Dimensions	62 x 25 x 62 mm	62 x 15 x 62 mm
Weight	22 g	15 g
Material	Plastic material	Plastic material
Usage	End cap used in addition to the square corner cover with overlapping graphic.	End cap used in addition to the quarter corner cover.

EXHIBITION SHELVES

Exhibition shelves give additional display space on the stand walls, fixed with dedicated brackets and pins.

The textile is incised at the height of the bracket setting. For extra attention, we offer shelves with led tape.

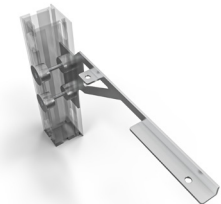
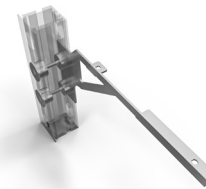
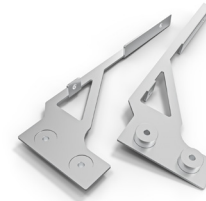


SHELVES



MFR-SHE-LED

SHELF BRACKETS



MFR-SHE-UCH-P-S

MFR-SHE-UCH-P-L-S

Dimensions 992 x 32 x 300 mm

Weight 3212 g

Material MDF

Usage Shelf secured to the frame with bracket MFR-SHE-UCH-P-L-S.

Dimensions 350 x 140 x 35 mm

Weight 507 g

Material Aluminium

Usage Furniture board top handle, fixed with fat 5 or 10 cm pins, or super slim (when fixing the bracket through two frames).

Dimensions 350 x 140 x 20 mm

Weight 507 g

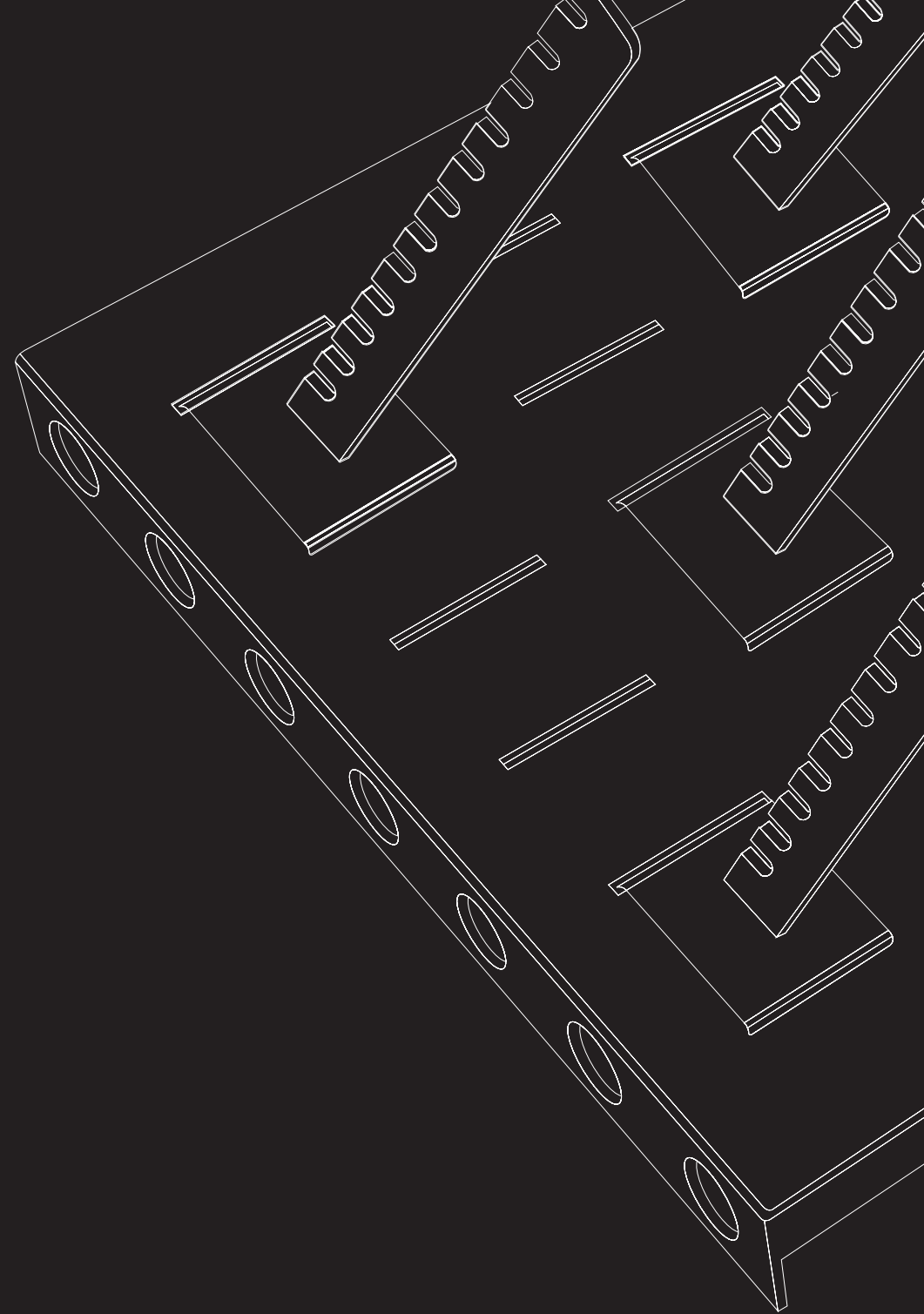
Material Aluminium

Usage Top bracket for tabletop with LED illumination, fixed with pin Fat 5 or 10 cm, or pin super slim (when fixing the bracket through two frames).

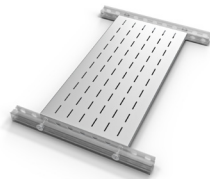
EXHIBITION PANEL

Exhibition panel provide additional display space on the stand walls. The aluminium perforated sheet allows the product to be hung in any configuration.

The panel is fixed to the inside of the frame with pins and a nut. The textile is cut at the height of the hanger.

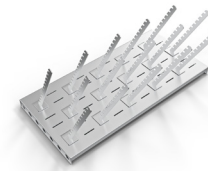


PANEL



MFR-SPI-PAN

PANEL HOOKS



MFR-HOOK

Dimensions

885 x 435 x 55 mm

425 x 68 x 52 mm

Weight

3500 g

268 g

Material

Aluminium

Aluminium

Usage

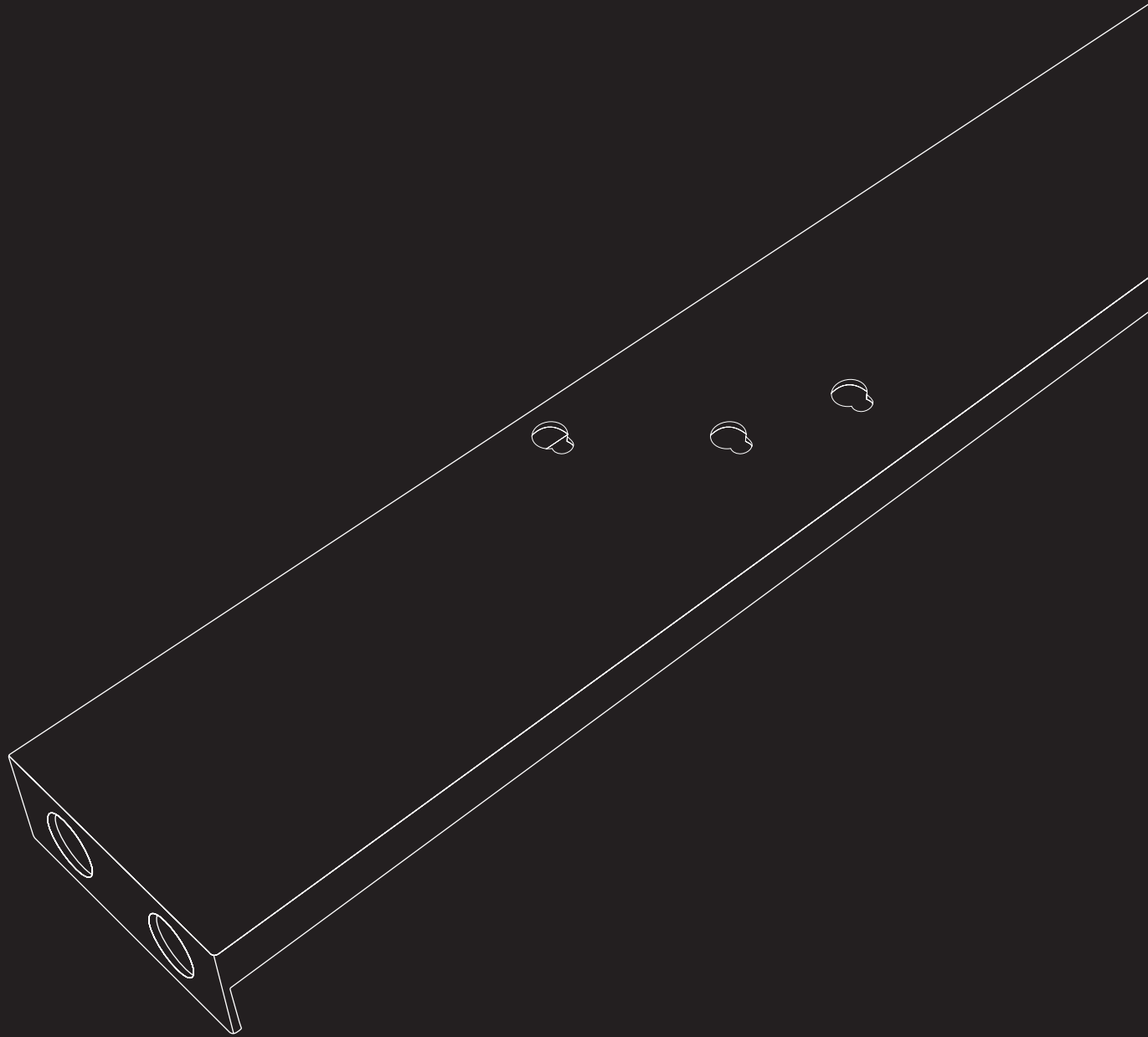
Panel mounted on the inside of the frame, using fat or slim pins 7 and 10 and the MFR-NAK-FAT nut.

Exhibition hook attached directly to the panel.

TV HOLDER

The TV holder is mounted on the inside of the frame using four pins and nuts.

The textile material is cut to fit the VESA mount, as well as to pull the cables behind the structure.



TV HOLDER



MFR-PAN-TV

Dimensions 885 x 135 x 55 mm

Weight 1210 g

Material Aluminium

Usage Panel mounted on the inside of the frame, using fat or slim pins 7 and 10 and the MFR-NAK-FAT nut.

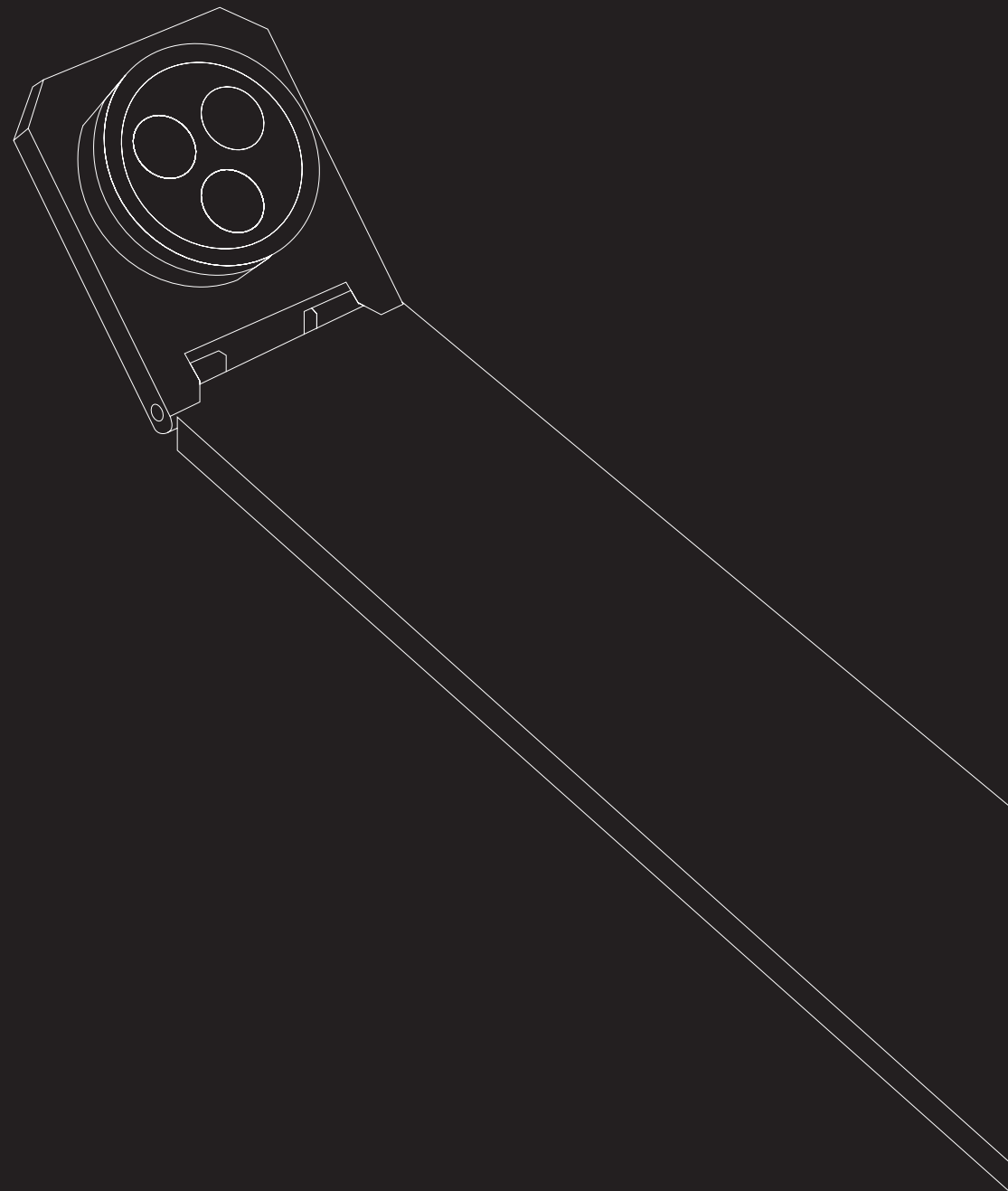
LED LIGHTING

In order to illuminate the stand and emphasise printed graphics, we propose additional lighting with led lamps. The lamps, which provide point light, are mounted to the upper profile of the frame using Fat 4cm pins.

We offer three types of lamps with two colours of finish and power:

Led lamp 60 and 116 Diodes - Dedicated to the Multiframe system, they have an additional connector that with Pin Fat 4 attaches to the upper frame profile.

Led lamp mFrame - Dedicated to the mFrame system with integrated pins with an internal pin. Attached to the upper side of the frame with two Pin Fat 4 pins.

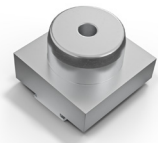


LED LAMP 60 DIODS

LED LAMP 116 DIODS

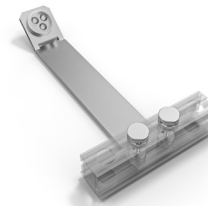
	LED-LAMP-LED-60-S	LED-LAMP-LED-60-B	LED-LAMP-LED-116-S	LED-LAMP-LED-116-B
Dimensions	885 x 135 x 55 mm	885 x 135 x 55 mm	630 x 350 x 155 mm	630 x 350 x 155 mm
Weight	1210 g	1210 g	1210 g	1210 g
Material	Aluminium	Aluminium	Aluminium	Aluminium
Usage	Finished in silver, the lamp has 60 LEDs with a total power of 11W.	Finished in black, the lamp has 60 LEDs with a total power of 11W.	Finished in silver, the lamp has 116 LEDs with a total power of 25W.	Finished in black, the lamp has 116 LEDs with a total power of 25W.

LED LAMP ADAPTER



MFR-LED-LAMP-A

LED LAMP mFrame



MFR-LED-LAMP-L

Dimensions 40 x 33 x 40 mm

485 x 95 x 32 mm

Weight 88 g

844 g

Material Aluminium

Aluminium

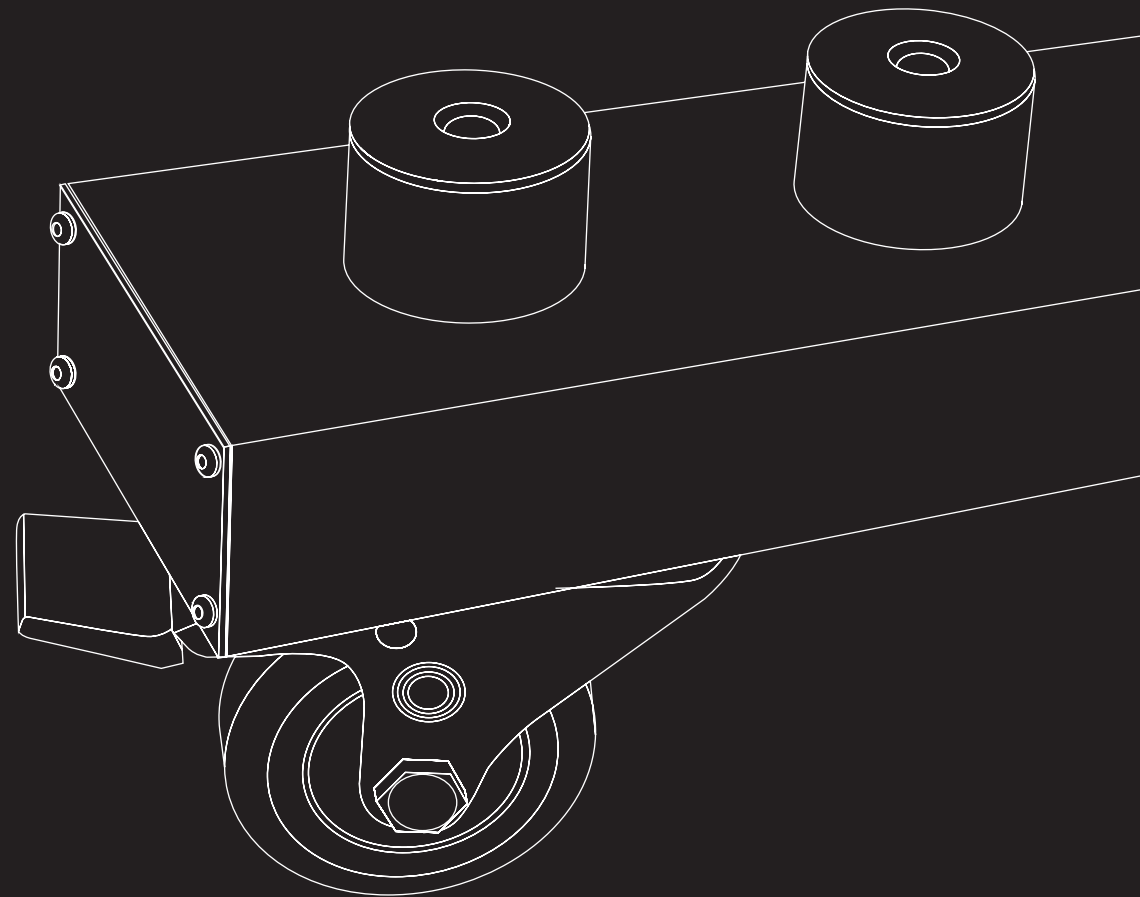
Usage Adapter used to attach Led lamp 60/116 diods, to mFrame frame.

The lamp is finished in silver with a total power of 25W.

TRANSPORT ACCESSORIES

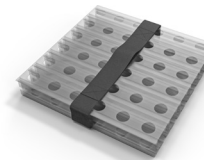
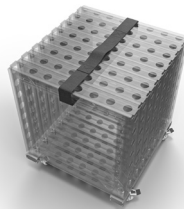
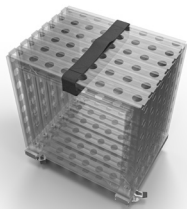
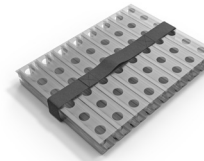
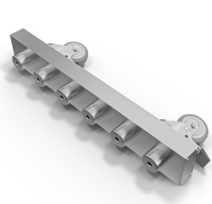
The mFrame system has dedicated solutions for transporting frames. Most often the stands are transported on pallets, with protective plastics in each corner to secure the frames.

To make transport easier, we offer trolleys with wheels that allow 6 or 8 frames to be clipped together, as well as transport bags with wheels for 99.2x124 cm and 99.2x148.8 cm frames.



FRAME TROLLEY

LOCKING STRAP



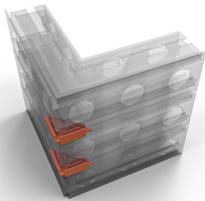
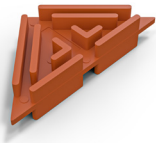
MFR-WOZ-6-R

MFR-WOZ-8-R

MFR-WOZ-8-R-P-B

Dimensions	395 x 135 x 62 mm	525 x 135 x 62 mm	Strap width: 55 mm
Weight	1157 g	1178 g	44 g
Material	Aluminium	Aluminium	Polyester Material
Usage	Mounted from the sides of the frames, the trolley can carry a maximum of 6 frames at a time.	Mounted from the sides of the frames, the trolley can carry a maximum of 8 frames at a time.	Strap that ties the frames together when transported on a trolley, dedicated to mFrames.

PROTECTIVE PLASTIC



MFR-TRA-PLA-0

Dimensions	40 x 14 x 40 mm
------------	-----------------

Weight	5 g
--------	-----

Material	Plastic material
----------	------------------

Usage	Protective plastic used between frames when transported on a pallet.
-------	--

TRANSPORT BAGS



MFR-WHE-BAG-125



MFR-WHE-BAG-150

Dimensions	1250 x 113 x 42 mm	1250 x 113 x 42 mm
Weight	8000 g	9000 g
Material	Codura	Codura
Usage	The bag holds 6 frames with a maximum size of 992 mm x 1240 mm.	The bag holds 6 frames with a maximum size of 992 mm x 1488 mm.

adsystem.

adsystem sp. z o. o.

NIP: 8942678597

ul. Atramentowa 11, 55-010 Bielany Wrocławskie

+48 672 672 000

+48 672 672 001

www.adsystem.pl